

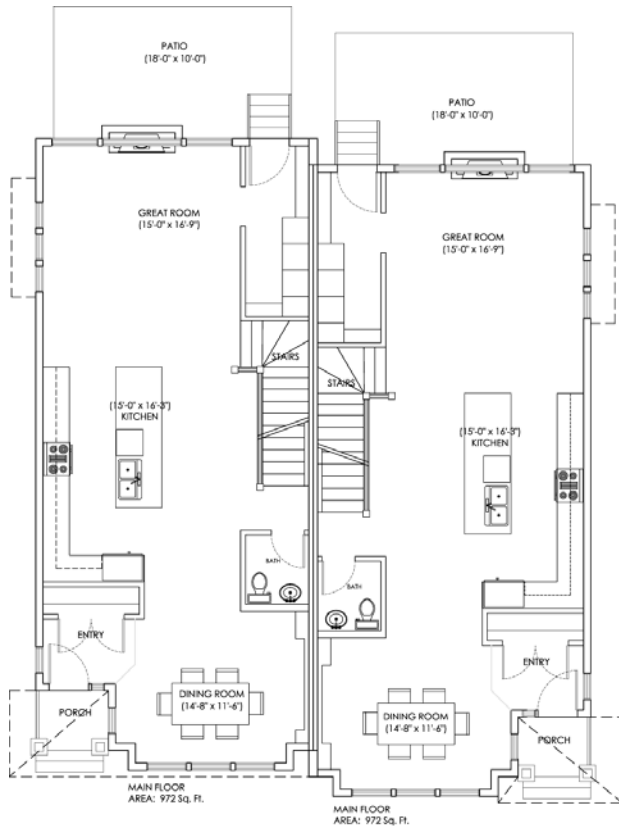
*home* FEATURES

- Niklas Homes presents the Port located on a quiet cul de sac only blocks to Marda Loop.
- The PORT has a very warm appearance with darker colours and rich finishes.
- Sunny south facing yard

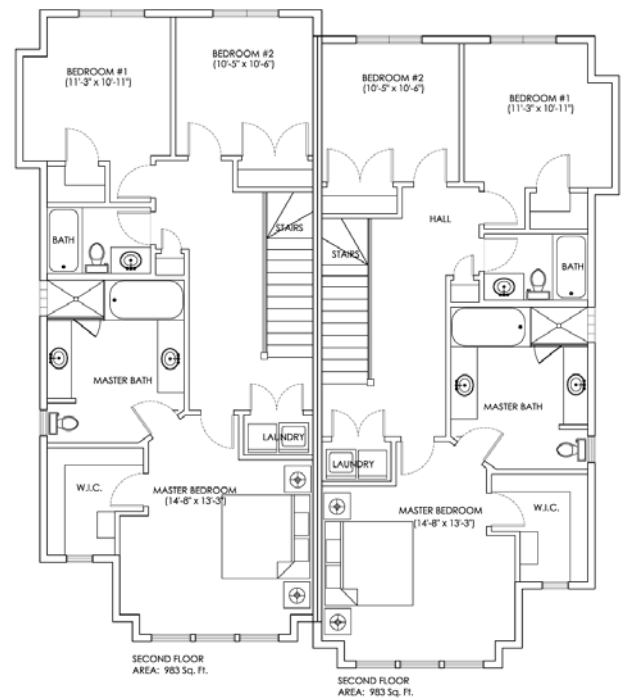


- 1950 Square Feet
- QUIETROCK party wall for the ultimate technology in soundproofing
- Open and Spacious Plan
- 3 Bedroom & 2.5 Baths
- Amazing Master Ensuite
- Finished in the Niklas Platinum Spec.
- Acrylic Stucco and Brick Exterior (Front)
- Exposed Concrete Steps
- Double Garage
- Treed Lot
- Available for Possession Summer 2007

*This plan is shown for illustrative purposes only and is subject to change*



MAIN FLOOR



SECOND FLOOR